

nanometer lighting

Installation Instructions of 'Product Series 15 & 17'

- Please read instructions carefully before attempting to install fixture and retain instructions for future reference.
- Before making any wiring connections, make sure power is disconnected.
- Electrical connections need to comply with National Electrical Code and Local Electrical Code.
- The fixture should be installed by a licensed electrician.

Stepwise Instructions (For Surface mounting only):

Step 1:

Before installing fixture on mounting surface, make sure surface is clean and straight.

Step 2:

Fixture supply with soldered connector.

1. For Static White (See image 1)



Image 1 : Static White Fixture with connector

2. For Tunable White (See image 2)



Image 2 : Tunable White Fixture with connector

3. For RGBW (See image 3)



Image 3 : RGBW Fixture with connector

57-10 49th Place Maspeth, N.Y. 11378
Phone : 718-497-0394
FAX : 718-821-3916
www.nanoltg.com

nanometer lighting

Step 3:

If two fixtures are connected with each other then leave ½” gap between two fixtures to run connectors.

Step 4:

There are two options for mounting fixtures (for more details see linear specsheets).

1. **Mounting Clip (See image 4):** *Use mounting clip should mount at every one feet.*
 - First need to drill mounting surface and place mounting clip there.
 - Linear fixture should mount according to drawing onto mounting clip.
 - 3/16” self-top countersunk screw should use for mounting.

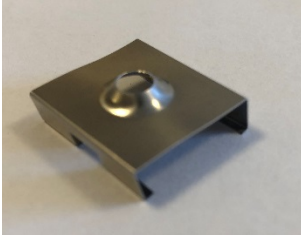


Image 4 : Mounting Clip

2. **Mounting Bracket (See image 5):** *6” mounting bracket should mount at every four feet.*
 - Steps should be same as above.
 - 3/16” self-top flathead screw should use for mounting.



Image 5 : 6” Mounting Bracket

Steps 5:

Always follow drawing to mount fixture and color sign for wiring diagram to driver/driverbox.